



# St Katherine's School and Nursery

## Inclusion Newsletter

September 2023

Dear Parents/Carers,

Welcome to our first SEND (Special Educational Needs and Disabilities) newsletter. We hope this will provide some useful information and keep you up to date with relevant contacts in school.

At St Katherine's we have a large number of children on our SEND register. These children are supported by the class teachers, learning support assistants, nurture team, speech and language learning support assistant and myself. Each child is different and needs support from different people and in different ways.

We are an inclusive school and want all our children to feel part of the school community at all times. Much of the support we put in place is accessible to all children all the time.

Mrs Caroline Loveland—SENCO

### Meet the Team!



**Mrs Caroline Loveland**

SENCO—Special Educational Needs Coordinator

DSL —Designated Safeguarding Lead

25 years of teaching experience working with children from Nursery to Year 6

Responsible for overseeing the SEND provision across the school, making referrals and working alongside professionals to support children in school, carry out screening checks for difficulties such as dyslexia, monitoring provision maps and writing personalised plans.



**Mrs Sandra Webb I**

S and L LSA—Speech and Language Learning Support Assistant

15 Years of experience working throughout the school

Carries out speech and language assessments on all new children and monitors interventions and outcomes.

Carries out screening checks for dyslexia and processing assessments with children.



**Miss Vicky Abbott**

FLO—Family Liaison officer

DSL—Designated Safeguarding Lead

Works closely with children and families and is able to signpost them to support and where necessary makes referrals to Early Help.



**Mrs Kerena Coates and Mrs Onay Carruthers**

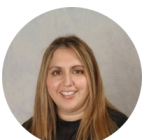
Nurture Learning Support Assistants

Support children from Reception to Year 6 through interventions and providing a safe space.

Support children with anxiety, anger, bereavement and other difficulties.

Becoming trained practitioners for Forest School.

Mrs Carruthers is completing further nurture training.



### Signposting and Contacts

NHS Kent Community Health will direct families to support via their website..

<https://www.kentcht.nhs.uk/>

NHS Children's Therapies, The Pod provides links and videos to support children

<https://www.kentcht.nhs.uk/childrens-therapies-the-pod/>

National Autistic Society provide Early Bird courses for parents.

<https://www.autism.org.uk/>

Barnardo's provide Cygnet parenting support programme.

<https://barnardos-parenting.org.uk/>

Space to be me support children with disabilities and SEND in Kent.

<https://space2beme.org.uk/>

Young Minds offers information and advice on wellbeing.

<https://www.youngminds.org.uk/>

### SEND Coffee Morning

Please come along to the school hall on **Tuesday 3rd October** between 9am and 10am to chat to other parents and ask any questions. Mrs Loveland and Mrs Webb will be around to chat to you informally.

Our SEND coffee mornings will provide us with key insights from parents regarding your views on SEND at St Katherine's. We will use any feedback to think about how we work in the future. This may include reforming how we communicate with and support parents.

It will also be an opportunity to gain a better understanding of processes of SEND including how referrals are made and how we work with outside agencies.



### Our Inclusive Classrooms

As part of our practise in all year groups we have lots of things in place to support children with language and communication difficulties, these include visual timetables, key vocabulary on displays, clutter free spaces, images on resources and where needed now and next boards.



For those children who need support to focus in lessons and sit still we can offer them fidgets, wiggle cushions, weighted blankets for their lap and stretch bands for chair legs.



Throughout the learning the teachers work hard to 'scaffold' the children's learning. This may be by providing prompts, sentence starters, visuals, adult support, vocabulary mats, extra modelling from teachers and many more ways.



On the next newsletter there will be information on other ways we support the children at St Katherine's.